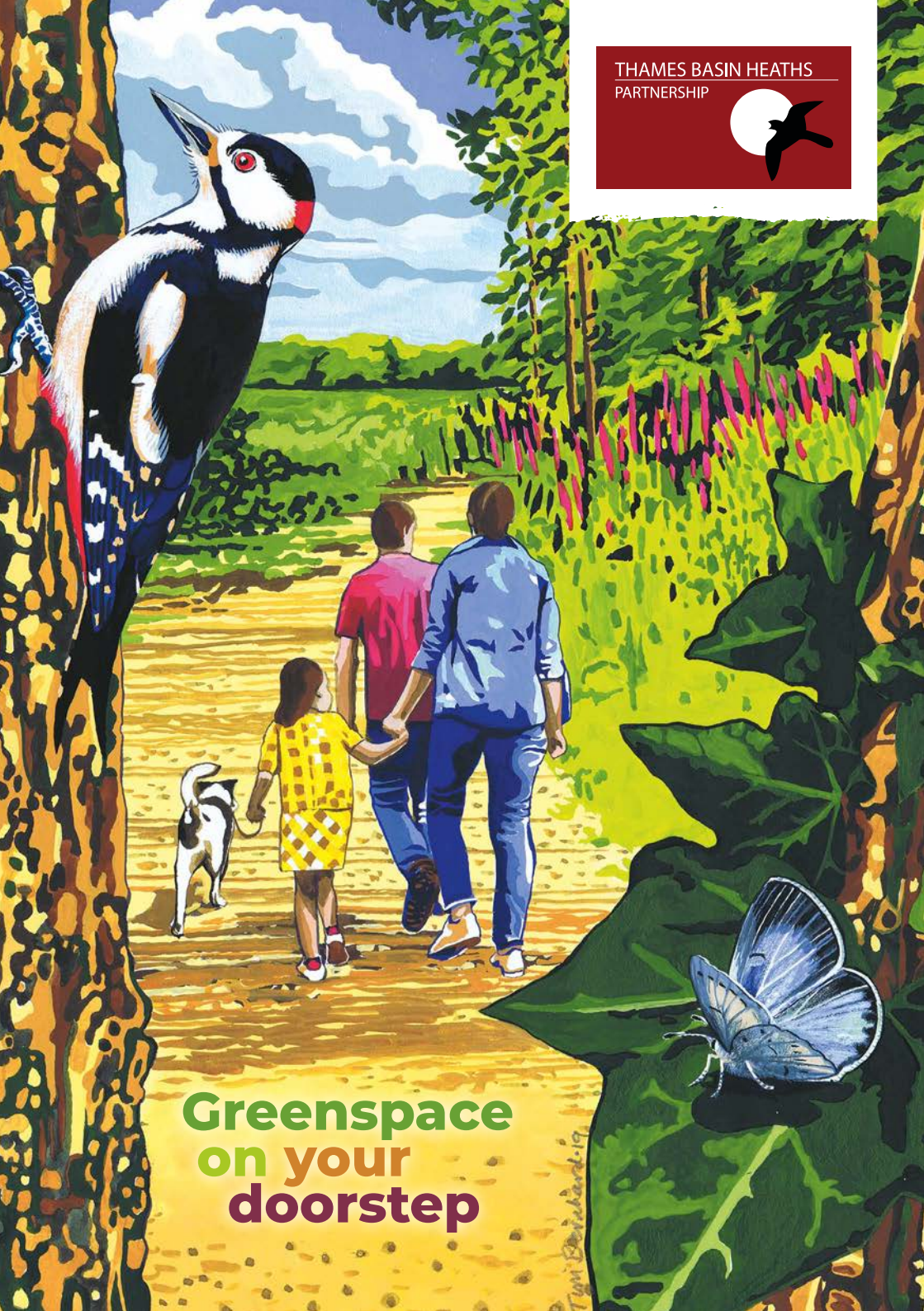


THAMES BASIN HEATHS  
PARTNERSHIP



**Greenspace  
on your  
doorstep**



## Key to amenities.

-  Free car park
-  Disabled parking
-  Toilets
-  Café
-  Bins / dog poo bins

-  Water (river or pond)
-  Views
-  Benches
-  Surfaced paths
-  Shaded, open or mixture
-  Links to longer walks

## A few things to bear in mind...

- Car parks listed offer at least 1 hour free parking. Most have poo bins, some even provide free poo bags.
- Distances given are typical walk lengths and not necessarily the longest walk possible.
- Postcodes aren't useful if there's no house near the entrance. We've given the nearest postcode, but recommend using websites like [what3words.com](https://www.what3words.com), [gridreferencefinder.com](https://www.gridreferencefinder.com) and [streetmap.co.uk](https://www.streetmap.co.uk) to lookup the exact location.
- We haven't checked all fences and can't say with certainty that a walk is safe for dogs off lead. Please always use your judgement.
- Information was checked thoroughly before publication, but things sometimes change. Please check our website for the latest updates and please let us know if we've got something wrong.

Much more detail, including maps, photograph galleries and hints about longer walks, on our website at:  
[tbhpartnership.org.uk/greenspace](https://tbhpartnership.org.uk/greenspace)








# Local country walks across Surrey, Hampshire & Berkshire!

Welcome to the third edition of “**Greenspace on your doorstep**”, our guide to places to walk in the Thames Basin Heaths area of Surrey, Hampshire & Berkshire.

This 2023 edition has 20 new entries since the 2019 edition! It's all thanks to the great work of our local councils and their ground-breaking strategy to protect your local heathlands.

We don't own or manage any of the places listed, but we work very closely with the local councils and land manager that do. So please let us know what you think about the walks, we love hearing from you.

**To find out more about the work of the Thames Basin Heaths Partnership, and how the places in this booklet are helping to protect the internationally important heathlands on your doorstep, visit us at...**

-  [tbhpartnership.org.uk](https://tbhpartnership.org.uk)
-  [facebook.com/TBHPartnership](https://facebook.com/TBHPartnership)
-  [twitter.com/TBHPartnership](https://twitter.com/TBHPartnership)
-  [instagram.com/tbhpartnership](https://instagram.com/tbhpartnership)
-  [tbhpartnership@naturalengland.org.uk](mailto:tbhpartnership@naturalengland.org.uk)



## Find a greenspace on your doorstep...

Entry	Page	Entry	Page
24 Allens Field	12	30 Horseshoe Lake	14
29 Ambarrow Court & Hill	14	80 Horsley Meadows	33
52 Ash Green Meadows	24	11 Keephatch	8
9 Ashridge Meadows	7	12 Keephatch Meadows	8
37 Bassetts Mead	17	10 Kentwood Meadow	8
60 Bisley Common	26	50 Lakeside Nature Reserve	50
17 Blue Mountain	10	3 Langley Mead	5
40 Bramshot Farm Country Park	20	22 Lily Hill & Longhill Parks	12
28 Broadmoor Farm Meadows	14	63 Little Heath Meadow	27
73 Brooklands Community Park	31	1 May's Farm Meadows	5
61 Brookwood Country Park	27	56 Mindenhurst	25
14 Buckhurst Meadow	9	31 Moulsham Meadows	15
27 Buckler's Forest	13	45 Naishes Wood	21
18 Cabbage Hill	10	25 Oakham Woods	13
78 Chantry Wood	32	8 Old Forest Meadows	7
65 Chertsey Common, Longcross	28	79 Oldlands Copse	33
72 Chertsey Meads	30	15 Peacock Meadows	9
62 Chobham Place Woods	27	13 Piglittle Field	9
64 Chobham Water Meadows	28	16 Pope's Meadow	10
2 Clares Green Field & Five Acre Field	5	44 Poulter's Meadows	21
19 Cut Countryside Corridor	11	38 Queen Elizabeth II Fields	17
57 Diamond Ridge Woods	25	77 Riverside Nature Reserve	32
58 Earlswood Park	26	6 Rooks Nest Wood	6
39 Edenbrook Country Park	17	48 Rowhill Nature Reserve	22
81 Effingham Common	33	53 Runfold Ridge	24
23 Englemere Pond	12	33 Shepherd Meadows	15
68 Ether Hill & Queenswood	29	43 Southwood Country Park	21
47 Farnham Park	22	42 Southwood Woodland	20
7 Finchwood Park	7	66 St. Ann's Hill	28
46 Folly Heights	22	54 St. Catherine's Road	24
71 Franklands Park	30	32 Swan Lake Park	15
55 Frimley Fuel Allotments	25	69 Timber Hill & Ottershaw Chase	29
20 Frost Folly Park	11	51 Water's Edge	23
26 Great Hollands Wood	13	4 Wellesley Water Meadow	6
70 Hare Hill	30	49 Wellesley Woodlands	23
41 Hartland Country Park	20	76 White Rose Lane Nature Reserve	32
35 Hawley Farm	16	36 Whitewater Meadows	16
34 Hawley Meadows & Blackwater Park	16	59 Windlemere	26
5 Hazebrouck Meadows	6	21 Windmill Meadows	11
74 Heather Farm	31	75 Woodham Common	31
67 Homewood Park	29		

### 1 May's Farm Meadows

Car park on Hyde End Lane, Ryeish Green RG7 1EP.  
What3Words: ///tower.lucky.appear.

Quiet meadows to explore close to Shinfield. Be sure to investigate either side of Hyde End Lane and the link through to Clares Green Field and Five Acre Field too. Find route details on our website.



### 2 Clares Green Field & Five Acre Field

Pedestrian entrance near the junction of Ryeish Lane & Clares Green Road, Shinfield RG7 1EN.  
What3Words: ///nobody.range.petty.

Tucked away meadows, taking in the fields on both sides of the track that runs between here and May's Farm Meadows. Clares Green Field links directly with Five Acre Field.



### 3 Langley Mead

Car park on Hyde End Road, Shinfield RG2 9EP.  
What3Words: ///jobs.barn.hook.

Nowadays it's rare to see a traditional wildflower meadow, but restoration at Langley Mead is turning back the clock. Seed brought in from nearby meadows will bring back the wildflowers, and regular visitors are enjoying their gradual return.





#### 4 Wellesley Water Meadow

Car park on Mill Road, Heckfield, Riseley RG7 1XU.  
What3Words: ///studio.prayers.goofy.

Deceptively large meadows with lovely views of the surrounding countryside. This tranquil spot beside the River Whitewater has sections of surfaced path and an impressive boardwalk, to take you safely across the damper areas in wet conditions.

 2.3km



#### 5 Hazebrouck Meadows

Pedestrian entrance on Princess Marina Drive, Arborfield Green RG2 9GR.  
What3Words: ///altering.relate.jetliner.

Thoughtfully laid out with wildflower meadows, ponds, hibernation areas and an impressive bat barn! The perfect place for local people to get a breath of fresh air.

 2.3km



#### 6 Rooks Nest Wood

Car park on Barkham Ride, Finchampstead RG40 4EU. What3Words: ///home.losses.catch.

Nice little place to stop off for a walk. Around 15,000 native trees have been planted as part of its transformation from farmland to public greenspace. Many were planted in 2010/2011 and they are starting to mature nicely.

 1.6km

#### 7 Finchwood Park

Pedestrian entrance to Finchwood Park housing development, Finchampstead RG40 4AW.  
What3Words: ///plausible.scorecard.pedicure.

Extensive meadow and wetland complex with routes to explore. Information boards along the way tell you about the history and the wildlife you might expect to see.

 4km

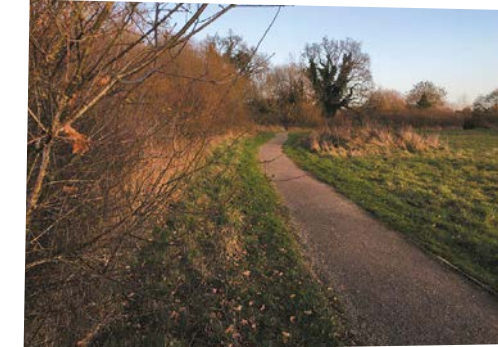


#### 8 Old Forest Meadows

Pedestrian entrance on Old Forest Road, Wokingham RG41 1HL.  
What3Words: ///began.status.twist.

Short walk along the Emm Brook and through wildflower meadows. A green sanctuary for wildlife and locals alike.

 1.8km



#### 9 Ashridge Meadows

Pedestrian entrance on Bingham Drive, off Bell Foundry Lane, Wokingham RG40 5QF.  
What3Words: ///sage.list.input.

A well-surfaced path leads you on a meandering route around this greenspace for the Eldridge Park development.

 2.3km







### 10 Kentwood Meadow

*Pedestrian entrance and parking for a few cars on Goddard Crescent, Wokingham RG40 5BP. What3Words: ///hush.intent.closes.*

A well-surfaced path leads you on a sinuous route around this landscaped meadow, handy for the housing development off Warren House Road.

 1km



### 11 Keephatch

*Pedestrian entrances at Dyer Road RG40 5PG, What3Words: ///soils.book.gaps  
Montague Close RG40 5PF  
What3Words: ///guard.wink.friday  
and Binfield Road RG40 5PS  
What3Words: ///intro.lived.useful.*

This woodland walk is pretty in the spring when the Bluebells are in flower and an attractive avenue of mature Horse Chestnut trees is an interesting feature. Can be a little muddy underfoot.

 1.5km



### 12 Keephatch Meadows

*Car park just off Binfield Road, Wokingham RG40 5PR. What3Words: ///sits.bland.valley.*

Pleasant walk linking directly with Piglittle Field to create a 3km circular walk. Far reaching views of the surrounding countryside and ponds popular with four-legged visitors!

 3km

### 13 Piglittle Field

*Pedestrian entrance off Ellwood Fields, Amen Corner, Binfield RG42 4FZ. What3Words: ///limp.diary.audit.*

Our first visit to Piglittle Field was a lovely surprise. On a clear day, you can see all the way to the Chiltern Hills. Link your walk with Keephatch Meadows for a 3km route and use the same parking.

 3km



### 14 Buckhurst Meadow

*Car park off William Heelas Way, Wokingham RG40 1RE. What3Words: ///unwanted.kind.loans.*

Take a loop around this nicely maturing meadow and you'll find a treasure trove of habitats. A highlight is the fantastic reedbed, home to dragonflies, birds and amphibians. Surfaced paths allow you to enjoy the extent of the meadow, no matter the weather.

 1.7km



### 15 Peacock Meadows

*Car park on Swift Fields, Bracknell RG12 8DS. What3Words: ///pile.newest.spared.*

With heaps of space and good paths, this is the ideal spot for dog walks, picnics and jogging. Or even brass rubbing! Crossing over Peacock Lane will take you to the north meadow and Big Wood. Big Wood has a lovely display of bluebells.

 4km







## 16 Pope's Meadow

Car park on St. Mark's Road, Binfield RG42 4BA.  
What3Words: ///scout.volume.wooden.

Quiet countryside park with a short, circular walk. Awarded a prestigious Green Flag Award, there's an impressive pond, spectacular mature oak trees and a play area for young children.

 <1km



## 17 Blue Mountain

Car park on Forest Road, Binfield RG42 4AF.  
What3Words: ///chill.neat.calculating.

**Closed overnight.**

Pleasant landscaped walk on what was Blue Mountain Golf Course. There are several deep water lakes, an interesting selection of trees and a small orchard being established.

 2.3km



## 18 Cabbage Hill

Car park on Forest Road, Binfield RG42 5RR.  
What3Words: ///diary.event.fits.

If space and a breath of fresh air is what you're looking for! The perfect spot for a picnic or to watch magnificent birds of prey soaring above. Take 'The Grand Tour' of Cabbage Hill and the Cut Countryside Corridor and you have around 6kms of paths to explore!

 2.9km

## 19 Cut Countryside Corridor

Car park at Larks Hill on Harvest Ride, Warfield RG42 2QA.  
What3Words: ///influencing.scared.miles.

The Cut Countryside Corridor is an interesting ramble along the River Cut. Linking Larks Hill, Piggy Wood and Garth Meadows. With options taking in Jock's Copse, Tinker's Copse and Cabbage Hill.

 6km



## 20 Frost Folly

Car park on Weller's Lane, Warfield RG42 6EN.  
What3Words: ///blues.flies.alert.

**Closed overnight.**

Tranquil place for a walk, with lovely views towards Warfield Church and the surrounding countryside. Lots of areas set aside for wildlife, with mature trees and well managed hedgerows that are a haven for all sorts of wild birds.

 2.3km



## 21 Windmill Meadows

Car park on Malt Hill, Warfield RG42 6BL.  
What3Words: ///filed.gold.hotel.

Pleasant meadow walk with nice views of the surrounding countryside, including to Warfield Church. Wellies are a must after rain. Check our website for suggested link to Frost Folly.

 2.5km







## 22 Lily Hill & Longhill Parks

Car park on Lily Hill Road, Bracknell RG12 2RX.  
What3Words: ///bill.leap.puddles.

Let yourself be charmed by characterful Lily Hill Park. There's something new to discover around every corner, including England's longest picnic bench! The Bullbrook Countryside Corridor is a 7.5km circular route including Lily Hill & Longhill Parks.

     4km



## 23 Englemere Pond

Car park on Swinley Road (B3017), Winkfield Row, Ascot SL5 8BB. What3Words: ///sang.focus.horn.

Englemere Pond is a jewel. In spring the reedbeds are full of chattering warblers, warm summer days bring out a multitude of dragonflies, and on summer evenings House Martins and Swallows swoop low over the water. It's not hard to see why it's a Local Nature Reserve and SSSI.

       2km



## 24 Allens Field

Car park off Liddell Way, Ascot SL5 9UZ.  
What3Words: ///match.thus.next.

**Closed overnight.**

The field has had a chequered history. Once a rubbish tip, then a fuel allotment set aside for the benefit of the poor, somewhere for local people to collect firewood. Now a lovely open space for Ascot!

    1.2km

## 25 Oakham Woods

Pedestrian entrances at Swords Drive and Charity Way, just off Old Wokingham Road, Crowthorne RG45 6GU.

What3Words: ///petal.belong.shells  
///racing.record.hurray.

Cosy patch of woodland and meadow just off the Old Wokingham Road in Crowthorne. Very handy for residents of Oakham Park.

   1.5km



## 26 Great Hollands Wood

Car park on South Road, Wokingham RG40 3EE.  
What3Words: ///shark.abode.cover.

A short wander through woodland on the edge of Great Hollands Recreation Ground. The recreation ground is not officially part of the walk, but makes a nice extension and offers a number of facilities including a children's play area.

    1km



## 27 Buckler's Forest

Car park off Woodcote Green, Crowthorne RG45 6LN.  
What3Words: ///noises.mercy.almost.

A huge open space in what used to be the grounds of the Transport Research Lab. Once used to test innovative ideas such as mini-roundabouts and cycle lanes! Now perfectly landscaped for running, cycling or walks with the dog.

        3.6km







## 28 Broadmoor Farm Meadows

Car park next to Crowthorne Rugby Club at Lower Broadmoor Road, Crowthorne RG45 7HD. What3Words: ///gracing.showering.hooks.

A tranquil spot with meadows and wooded knolls to explore. When the gorse is in flower, the meadows have a heathland feel and we feel quite at home!

 2.3km



## 29 Ambarrow Court & Hill

Car park on A321, Wokingham Rd, Sandhurst GU47 8JD. What3Words: ///metro.slate.aspect.

Lovely nature reserve with two waymarked trails. The first explores the grounds of a once magnificent country estate, now a popular easy-access route. The second takes you up the intriguing Ambarrow Hill. Sadly, not a burial mound, just an interesting natural feature!

 1.5km



## 30 Horseshoe Lake

Car park on Mill Lane, Sandhurst GU47 8JW. What3Words: ///bricks.blame.salon.

Water-lovers will enjoy this gentle walk along the River Blackwater and around the lake, stopping off at the dedicated dog beach or calling in at the dog-friendly, lakeside café for a snack.

  2km

## 31 Moulsham Meadows

Small car park on Gale Close, off Moulsham Lane, Yateley GU46 7AT. What3Words: ///burden.collide.reaction.

Nice little walk with village green feel, just off Moulsham Lane. If you're looking for a short walk in the Yateley area, this could be just the ticket.

 1.3km



## 32 Swan Lake Park

Car park on Swan Lane, Sandhurst GU17 0DN. What3Words: ///thick.stones.sample.

**Closed overnight.**

A nice place to enjoy watery delights, swans are aplenty here, not surprisingly! A pleasant walk through a meadow and around a fishing lake. You'll find that most paths are well surfaced and you can pick up the Blackwater Valley Path for a longer walk.

 1.6km



## 33 Shepherd Meadows

Car park off the A321, Marshall Road, Sandhurst GU47 0FL. What3Words: ///breezes.shin.bandstand.

Award-winning park named after wildlife artist and campaigner David Shepherd. In the spring and summer the meadows are carpeted in wildflowers. Explore too neighbouring Sandhurst Memorial Park, or head upstream to Hawley Meadows.

 2.7km







### 34 Hawley Meadows & Blackwater Park

Car park on the A331, Camberley GU15 3YL.  
What3Words: ///curving.inflating.ethic.

A lovely green stretch of river bank. Make the most of your walk by following the River Blackwater south, as far as the M3 flyover, and then north, following the railway and through a gate into wooded Blackwater Park.

 3.7km



### 35 Hawley Farm

Car park at Hawley View, just off the B3272 Hawley Road GU17 9ER.  
What3Words: ///icebergs.textiles.verifyng.

A lovely undulating meadow with views out to the surrounding countryside and a nice mixture of mature trees and new planting. Picnic tables and play park.

 1.7km



### 36 Whitewater Meadows

Car park at the top of Papermill Avenue, Hook RG27 9QU.  
What3Words: ///alien.acids.shortcuts.

Tucked away meadows bustling with insect and bird life. A tranquil walk along the banks of the crystal clear River Whitewater, away from busy roads and with opportunities for a cooling paddle in the river for four-legged friends.

 2.3km

### 37 Bassetts Mead

Car parks at the top of Holt Lane and just off Doctor's Acre, Hook RG27 9UW.  
What3Words: ///overtones.shine.truly  
///anchorman.bounding.offerings.

Bassetts Mead may be small, but it definitely delivers. The river bank is a prime location, especially on a hot day when dragonflies are out. But explore the meadows, ponds and copse too, where excellent information boards tell you all about this lovely little place.

 1.8km



### 38 Queen Elizabeth II Fields

Car park on Dilly Lane, Hartley Wintney RG27 8EE.  
What3Words: ///sometime.cycle.carefully.

Pretty woodland walk and lovely wildflower meadow with great views across the surrounding countryside. Convenient for Hartley Wintney.

 1km



### 39 Edenbrook Country Park

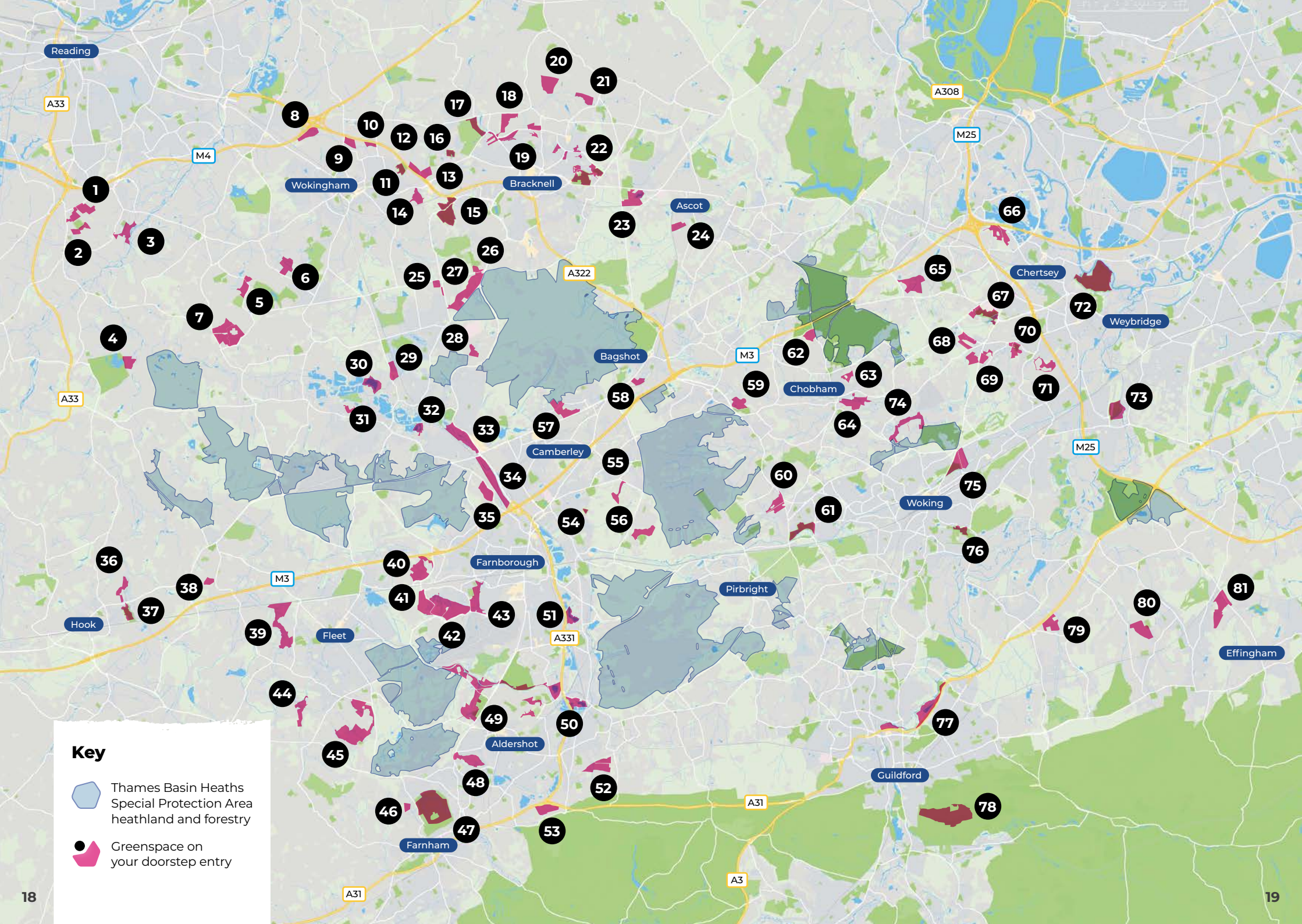
Car park off Emerald Avenue, Fleet GU51 5DW.  
What3Words: ///allowable.shuts.weeded.

We've watched this place with interest as it's matured into a wonderful reserve for wetland wildlife. Follow the surfaced paths that lead you round the interesting meadows, ponds and boardwalks. And, handily, it's right next door to Hart Leisure Centre with toilets and café.

 5.3km







Reading

A33

M4

Wokingham

Bracknell

Ascot

A308

M25

66

Chertsey

Weybridge

A33

Bagshot

M3

Chobham

M25

Camberley

Woking

36

Farnborough

Pirbright

Hook

M3

Fleet

51

A331

Effingham

44

Aldershot

50


Farnham


52

Guildford

78

### Key

 Thames Basin Heaths Special Protection Area heathland and forestry

 Greenspace on your doorstep entry

A31

A3





### 40 Bramshot Farm Country Park

Car park off Bramshot Lane, Fleet GU51 2RU.  
What3Words: ///wept.leads.immune.

**Closed overnight.**

Thoughtfully designed greenspace with a choice of trails. Stick to dry land on the 'Leaping Hare Loop' or branch out on the mown paths and boardwalks of the 'Old Oak Way'. Find charmingly carved benches and stately oaks.

2.5km



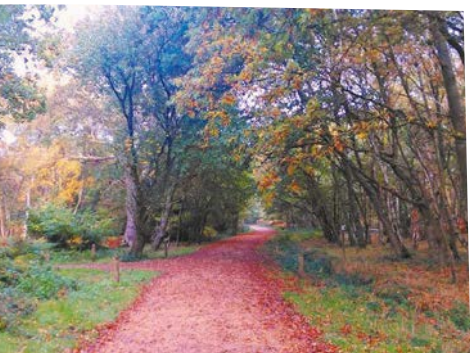
### 41 Hartland Country Park

Car park on Bramshot Lane, Fleet GU14 0FB.  
What3Words: ///pipe.island.commoners.

**Closed overnight.**

A network of good footpaths explore woodland, ponds and a large open picnic area. There's a play area, kids' bike track and, in other corners, fascinating reminders of a military past.

2.5km



### 42 Southwood Woodland

Parking on Kennels Lane, Farnborough GU14 0LL.  
What3Words: ///tropic.confusion.brink.

Beautifully laid out woodland with surfaced paths, signed trails and wonderfully carved information boards. This much loved place has its star turn around the end of April, when the Bluebells, and other woodland flowers, are at their best.

1.6km

### 43 Southwood Country Park

Car park at the end of Kennels Lane, Farnborough GU14 0LL.

What3Words: ///reduction.empty.spruced.

Be sure to explore both parts of this attractive walk. Southwood Country Park (West) accessed from Kennels Lane, and Southwood Country Park (East) on the other side of Ively Road. Links nicely to Southwood Woodland too.

>5km



### 44 Poulter's Meadows

A track off Danvers Drive, Crookham Village GU52 0ZE, leads to the car park.

What3Words: ///using.talents.trump.

A peaceful and attractive walk. Large expanse of water meadow to explore, with streams and extensive boardwalks. A detour to the top of a small hill is rewarded by a bench and a view!

2.3km



### 45 Naishes Wood

Car park off Naishes Lane, Church Crookham GU52 8DT.

What3Words: ///summit.sparrows.nail.

Formerly Queen Elizabeth Barracks, home to the Gurkha Rifles. Now delightful woods and meadows. As you explore the network of paths you'll come across fine views and a unique collection of World War II pillboxes.

6km







## 46 Folly Heights

*Pedestrian entrance on Old Park Lane bridleway GU9 0AN.  
What3Words: ///compelled.crisps.nightfall.*

Only a short walk, but very pretty in good weather and there's a spectacular view. Links to longer walks via Old Park Lane bridleway.

 1km

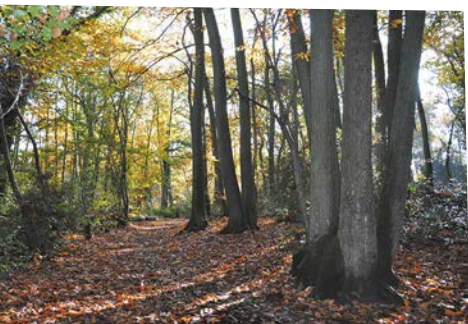


## 47 Farnham Park

*Car parks off Folly Hill (A287), Farnham GU9 0AU.  
What3Words: ///reserve.annual.marketing  
///universe.ruffle.satellite.*

This extensive park and Local Nature Reserve won't fail to please. With far-reaching views, a castle, circular walks and plenty of hills, streams and valleys to explore, this place has it all. Great walks, historical interest and a landscape to die for.

 4km



## 48 Rowhill Nature Reserve

*Car park on Cranmore Lane, Aldershot GU11 3BD.  
What3Words: ///entire.button.energy.*

Gorgeous shady woodland, great for cooling down in summer! This wonderful nature reserve has been lovingly managed and cared for. Discover the source of the River Blackwater, the start of a green corridor on the Surrey Hampshire boundary.

 2.3km

## 49 Wellesley Woodlands

*Car parks around Aldershot, including Fleet Road GU11 2HL.  
What3Words: ///nerve.horses.crass.*

Fantastic woodlands with lots of space to explore! Marked trails link lovely woodlands, sections of the Basingstoke Canal towpath and a large fishing lake. Named after Arthur Wellesley, better known as the 1st Duke of Wellington!

 10km



## 50 Lakeside Nature Reserve

*Car park off Lakeside Road, Ash Vale GU12 5AA.  
What3Words: ///unwanted.media.good.*

A tranquil spot with a lovely view across the lake. Extend your walk along the Blackwater Valley Path, waymarked path towards Hollybush. There's a great play park too, complete with zip wire and mini-climbing walls.

 1.4km



## 51 Water's Edge

*Entrance on Lake Avenue, off the B32411 Mytchett Road, Mytchett GU16 6AF.  
What3Words: ///skins.keys.motel.*

Meadows adjacent to an attractive lakeside walk that's been incorporated into the Water's Edge housing development at Mytchett. Circular lakeside walk and an optional detour through the adjacent meadow. Only very limited parking.

 1.9km







## 52 Ash Green Meadows

Car park at the end of South Lane, Ash GU12 6NG.  
What3Words: ///meals.body.shin.

It's well worth seeking out this huge area of fenced meadow. The perfect place for a bit of peace and quiet. From the car park, cross the disused railway line, now a surfaced footpath, and take the signposted path.

     3km



## 53 Runfold Ridge

Car park on Tongham Road past The Packhouse antiques centre GU10 1PJ.  
What3Words: ///looked.dame.gravel.

**Closed overnight.**

Unrivalled views across the Blackwater Valley and surrounding area. Link this walk with Ash Green Meadows, via the Christmas Pie Trail.

      2km



## 54 St. Catherine's Road

Pedestrian entrance on St. Catherine's Road, Frimley GU16 8NS.  
What3Words: ///solicitor.pavement.poems.

The former playing fields of Clewborough House School have been transformed into this small, but perfect greenspace for local residents. A pleasant, compact heathland with a level path.

     0.5km

## 55 Frimley Fuel Allotments

Entrance on Old Bisley Road, Frimley GU16 9QA.  
What3Words: ///converter.slows.opts.

An attractive and varied woodland walk, with a signposted trail to help you make the most of your visit. The route passes a particularly lovely pond, skims the boundary of Pine Ridge Golf Club and is surprisingly hilly in places!

   2.3km



## 56 Mindenhurst

Car park on The Royal Way, Deepcut GU16 6GQ.  
What3Words: ///accent.soil.bloomers.

This circular woodland walk forms part of the Mindenhurst housing development at Deepcut, created on land that was military barracks until 2013. Nearby you'll find the listed garrison church, now St Barbara's Community Church.

     2.3km



## 57 Diamond Ridge Woods

Pedestrian access and limited parking in laybys on College Ride, Camberley GU15 4EZ.  
What3Words: ///spend.anchovies.bride.

Woodlands open to the public and handy for Camberley. A little unloved, but great for exploring.

   3km







## 58 Earlswood Park

Beside Waitrose on London Road, Bagshot GU19 5DF. What3Words: ///clustered.guarding.glove.

**3 hours free parking at Waitrose.**

Visit in May and you're in for a treat! The rhododendrons are a little bit special. Once part of a national collection, a kind of library of rhododendron varieties. There are other horticultural surprises too, as this land was once home to a garden centre.

 1.3km



## 59 Windlemere

Car park on Blackstroud Lane East, West End GU18 5XR.

What3Words: ///fight.shop.arch.

**Closed overnight.**

This former golf course is now a landscaped greenspace, complete with dedicated car park, plenty of poo bins, poo bag dispensers, a lovely dog-friendly pond, mown paths and areas for nature including wildflower meadows.

 2.3km



## 60 Bisley Common

Parking for two or three cars in layby on Stafford Lake, Bisley GU24 9FT.

What3Words: ///lots.purple.ends.

Like many commons in the area, Bisley Common has been used by local residents for centuries. Once a source of fuel and other materials, and as pasture. These days the main use is exercise and recreation.

 2.3km

## 61 Brookwood Country Park

Car park on Redding Way, Knaphill GU21 2AY.

What3Words: ///shut.bricks.king.

A lovely green place beside the Basingstoke Canal. Find a 1.4km surfaced path and links to longer walks along the canal. Visit during the summertime when the butterflies and dragonflies are enjoying the sunshine. And if you're lucky, you may even spot a Kingfisher!

 2km



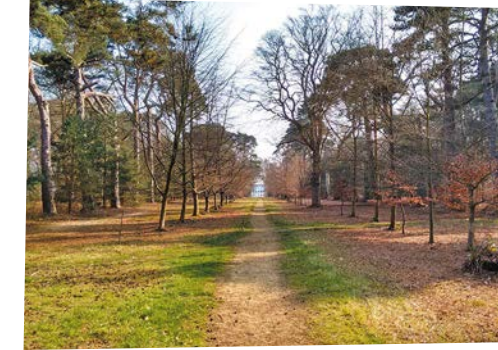
## 62 Chobham Place Woods

Car park on Valley End Road, Chobham GU24 8TN.

What3Words: ///lows.glee.crown.

A small yet intriguing woodland, full of history, and great for a short walk. Signposted trail takes in a historic tree-lined avenue originally planted in 1702 and a little known war memorial remembering those who went to the Crimean War in 1853.

 1km



## 63 Little Heath Meadow

Pedestrian entrance off Garden Drive, Chobham GU24 8BF.

What3Words: ///racing.happen.soccer.

Lovely little corner of Chobham, a gem waiting to be discovered. A delight to come across unexpectedly is a large pet cemetery. With graves dating back to the 1910s, many much loved pets are resting here.

 2km







## 64 Chobham Water Meadows

Car park off High Street, Chobham  
(behind 'Chobham Rider') GU24 8LZ.

What3Words: [///milk.gums.chat](#).

**1 hour free parking with ticket.**

A real gem of a walk, providing natural tranquillity. You could be a million miles from the traffic! Particularly lovely in the spring and summer, when the meadows are alive and buzzing with butterflies and bees.

 2.7km



## 65 Chertsey Common, Longcross

Car park on Kitsmead Lane, Chertsey KT16 0EF.

What3Words: [///jets.mirror.slower](#).

An information board in the car park displays a clear map, showing the choice of routes, starting with a short loop on a well finished path. Or branch out from the surfaced path, and take a loop around neighbouring fields.

 2.7km



## 66 St. Ann's Hill

Car park off St. Ann's Hill Road, Chertsey KT16 9DB.

What3Words: [///gladiators.vocal.lines](#). Disabled parking at What3Words: [///narrow.skin.sports](#).

Admire the stunning views of Surrey and the surrounding area from one of the highest points in Runnymede. Enjoy huge Redwoods and discover historical occupation dating back to the Bronze Age.

 1.4km

## 67 Homewood Park

Car park on Stonehill Road, Chertsey KT16 0AG.

What3Words: [///launch.bind.filer](#).

**3 hours free parking with ticket.**

Fine English Oaks lend a noble air to Homewood Park. Originally the grounds of Botleys Mansion, a lovely building dating from c.1765. Designed by architect Kenton Couse, who also happened to design number 10 Downing Street.

 2km



## 68 Ether Hill & Queenswood

Car park at Ottershaw Memorial Fields on

Fox Hills Road, Ottershaw KT16 0ES.

What3Words: [///cycle.bowls.bond](#).

A well waymarked trail takes you around the woodlands and to the top of Ether Hill to admire a view across the Surrey countryside. Once the site of public gallows! For a longer walk, link up with neighbouring Timber Hill & Ottershaw Chase.

 1.7km



## 69 Timber Hill & Ottershaw Chase

Car park on A320 (Guildford Road)

Ottershaw KT16 0PB.

What3Words: [///sketch.neck.save](#).

Excellent information boards describe these woodlands. Did you know that Ottershaw Chase's splendid Sweet Chestnut trees had a close shave when they were sold to a timber merchant? Luckily for us, the merchant went bust and the trees were saved!

 2km







## 70 Hare Hill

*Pedestrian entrance at the top of Spratts Lane, Ottershaw KT15 1AZ.*

*What3Words: ///soils.edges.many.*

Fine Oak trees and a Hornbeam hedge hint at Hare Hill's past. Now a lovely woodland, with an interesting pond fed by a nearby spring. What a host of wildlife must live in its soggy bottom!

 1.5km



## 71 Franklands Park

*Car park on Strawberry Fields, Addlestone KT15 1LH.*

*What3Words: ///answer.note.dwell.*

Pleasant waymarked stroll through woodlands and meadows, winding around the Franklands Park housing development. Find a well-equipped play area, complete with zip wire and adventure climbing frame, plus a range of outdoor fitness equipment.

 2.3km



## 72 Chertsey Meads

*Car parks on Mead Lane, Chertsey KT16 8LG.*

*What3Words: ///kings.curry.mull and ///pushes.half.sizes.*

Meadow walking at its best, with loads of space and gorgeous views of the River Thames. Choose your own route through the different fields, along mown paths, with shorter and longer options.

 4km

## 73 Brooklands Community Park

*Car park on Sopwith Drive, Weybridge KT13 0XF.*

*What3Words: ///hugs.regime.digit.*

A unique place. Once home to British motor sport and aviation. Today it's a wildflower meadow, criss-crossed with tarmac tracks, popular with walkers, runners and families. A great place for youngsters to hone their cycling skills!

 1.5km



## 74 Heather Farm

*Car park off Chobham Road (A3046),*

*Woking GU21 4XY.*

*What3Words: ///asserts.pads.hoot.*

Attractive meadows and wetlands on the banks of the River Bourne. In hot weather the river is a great cooling off spot! There's a dog-wash and don't leave without trying the goodies at the dog-friendly café.

 4.5km



## 75 Woodham Common

*Car park on Monument Road, Woking GU21 5LU.*

*What3Words: ///supply.poker.fend.*

**Max stay 2 hours.**

Woodham's Bedser Trail is a lovely walk through woodland and heathland, dedicated to Woking's cricketing heroes. Also discover Bronze Age burial mounds and a tranquil peace garden.

 1.2km







## 76 White Rose Lane Nature Reserve

*Pedestrian entrance on White Rose Lane GU22 7LP.  
What3Words: ///poker.ledge.plans.*

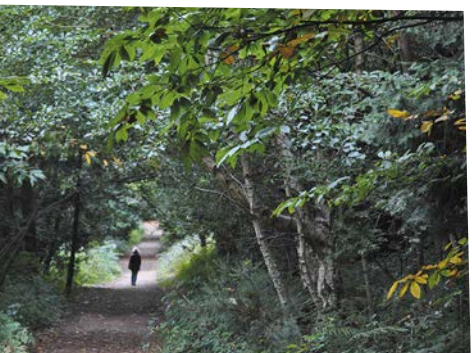
Little Local Nature Reserve, featuring Alder woodland beside the Hoe Stream in Woking. Makes a nice walk if combined with a stroll along the stream from Woking Park Leisure Centre.



## 77 Riverside Nature Reserve

*Car park on Bowers Lane, Guildford GU4 7ND.  
What3Words: ///lively.label.quest.*

Green Flag Award-winning meadows close to Guildford. Well worth a visit for its enormous lake, picnic area and beautifully carved benches. There are boardwalk routes to explore, with an observation hide tucked away in the reeds. And the neighbouring River Wey has endless interest.



## 78 Chantry Wood

*Car park just off Echo Pit Road, Guildford GU4 8AW.  
What3Words: ///ticket.trails.entertainer.*

Peaceful wooded hillside, where you can pause to admire views of an iconic Guildford landmark and also over Chilworth towards the South Downs. And don't miss the Bluebells in spring! Links to longer walks on the North Downs Way are an added bonus.



## 79 Oldlands Copse

*Car park on Tithebarns Lane, West Clandon GU23 7LE. What3Words: ///mercy.copy.copies.  
Closed overnight.*

Signposted circular walk through pretty meadows and Bluebell wood. Links to longer walks using the public footpath network.



## 80 Horsley Meadows

*Car park on Long Reach, West Horsley KT24 6NG.  
What3Words: ///cones.pets.deflection.*

Tranquil meadows nestled in rolling countryside, enjoying views to the Surrey Hills. Surrey Wildlife Trust are managing it with wildlife in mind and it will only get better as it matures.



## 81 Effingham Common

*Next to Effingham Junction train station. Very limited parking on the lane called Effingham Common KT24 5JE.  
What3Words: ///played.nature.stuff.*

The walk to the highest point of this lovely meadow, passing two ponds, is worth the effort for the view. Listen for the resident Skylarks, the soundtrack of summer! To protect these birds, dogs should be kept to paths May to August.







# Enjoying the Thames Basin Heaths with your dog...

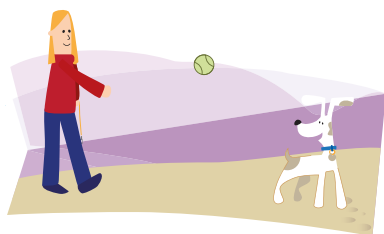
## Good dog owners... keep to main paths

Help avoid disturbance by simply keeping to the main paths and keeping your dog out of the vegetation during the breeding season, March to September.



## ...keep their dog in sight

If you can see your dog, you know it's safe and you can see what it's up to! Some people are frightened of dogs, so ask before letting your dog approach and don't let it jump up. Some dogs need space, and horse riders and cyclists need extra consideration too.



## ...always bag and bin

Any bin will do and if there's no bin, please take it home. Dog mess carries pathogens dangerous to humans, livestock and your dog. If left on the ground, it will enrich the soil leading to the loss of unique heathland flora.



## ...prevent their dog from chasing wildlife or livestock

Do train your dog to have good recall, or keep it on a lead or long-line. Train it to be disinterested in wildlife and grazing animals. In the unlikely event that you're chased by cattle, let your dog off the lead so you can both get away. Always follow the Countryside Code.



## ...follow requests on signs

Noticeboards are often the best way to find out important information about where you're walking, including the presence of grazing animals, or sensitive wildlife, and who to report problems to.

## ...make walks interesting

Adding play or training provides mental stimulation to keep your dog happy, strengthen your bond and keep the focus on you. Always remember to throw balls along the path, not into the vegetation.



## ...use 'Greenspace on your doorstep'

Try your local 'Greenspace on your doorstep' walks to help take the pressure off the heaths.

Thank you for following our 'Good dog guide'






Looking for dog-friendly places to explore? Want to be an ambassador for responsible dog ownership? You've come to the right place!



Heathland Hounds is our friendly community group for dog owners across the Thames Basin Heaths area of Surrey, Hampshire & Berkshire. We share lots of great information about dog-friendly walks and news & chat from the heaths. Why not check out our regular group dog walks and discover new and exciting places to explore! We also run social events including training and behavioural advice.

**It's FREE so why not join in the fun?**

-  [facebook.com/  
groups/HeathlandHounds](https://facebook.com/groups/HeathlandHounds)
-  [instagram.com/  
heathlandhounds/](https://instagram.com/heathlandhounds/)
-  [twitter.com/  
HeathlandHounds](https://twitter.com/HeathlandHounds)